

Technische Daten

# Profile und Zubehör

Alle Belastungswerte in diesem Katalog sind mit Sicherheiten gegen Abrutschen oder Materialversagen angegeben. Der Sicherheitsfaktor ist in jedem Fall > 2 gewählt. Das bedeutet für den Anwender, dass er die zulässigen Werte grundsätzlich ausnutzen kann.

### Strangpressprofil

Kurzzeichen Al Mg Si 0,5 F 25  
Werkstoffnummer 3.3206.72  
Zustand: warmausgehärtet

### Mechanische Werte (gelten nur in Pressrichtung)

|                                 |                             |
|---------------------------------|-----------------------------|
| Zugfestigkeit R <sub>m</sub>    | min. 245 N/mm <sup>2</sup>  |
| Fließgrenze R <sub>p0,2</sub>   | min. 195 N/mm <sup>2</sup>  |
| Dichte                          | 2,7 kg/dm <sup>3</sup>      |
| Bruchdehnung A <sub>5</sub>     | min. 10 %                   |
| Bruchdehnung A <sub>10</sub>    | min. 8 %                    |
| Linearer Ausdehnungskoeffizient | 23,6x10 <sup>-6</sup> 1/K   |
| Elastizitätsmodul E             | ca. 70000 N/mm <sup>2</sup> |
| Schubmodul G                    | ca. 25000 N/mm <sup>2</sup> |
| Härte                           | ca. 75 HB-2,5/187,5         |

### Toleranzen

Formabweichungen wie Geradheits- und Ebenheitstoleranz nach DIN EN 12020 Teil 2.  
Nicht zugeschnittene Profile weisen fertigungsbedingte Überlängen auf, die bis zu 100 mm betragen können.

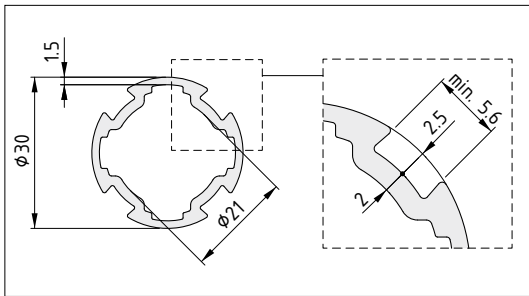
### Hinweis:

Die Belastungswerte gelten für statische Beanspruchung. Bei dynamischen Lasten sind die Spitzenwerte als Vergleichswert zu betrachten.

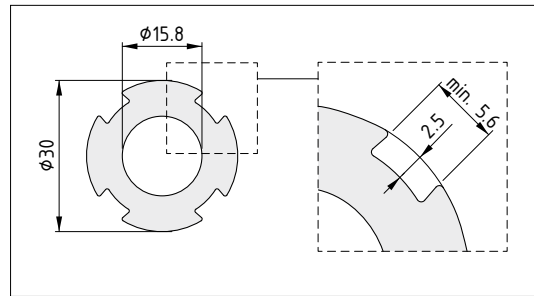
### Oberfläche

Die Aluminiumprofile sind naturfarben (CO) eloxiert und damit dauerhaft kratzfest und korrosionsgeschützt. Oberfläche mattgebeizt (E6), anodisiert und verdichtet. Mindestdicke 10 µm, Schichthärte 250–350 HV. Durch die umlaufende harte Eloxalschicht ist der Sägeschnitt besonders gratarm und muss nicht nachbearbeitet werden.

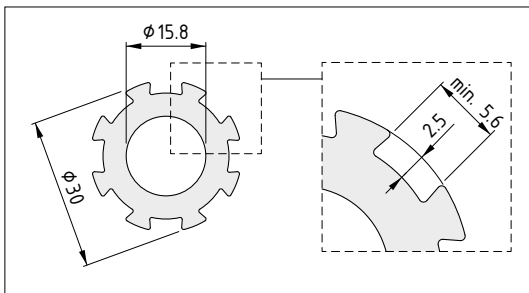
Profilorhr D30



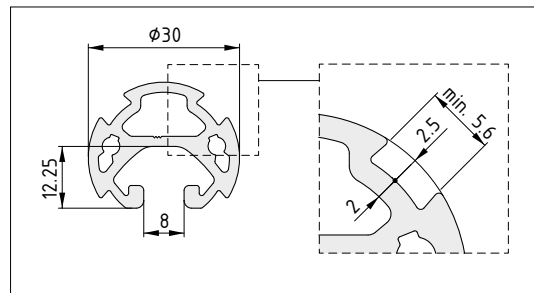
Profilorhr D30 schwer



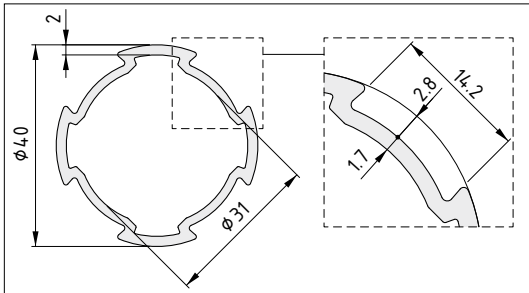
Profilorhr D30-45° schwer



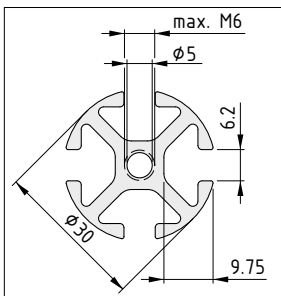
Profilorhr 8 D30



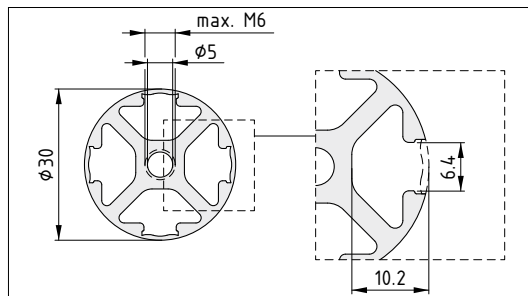
Profilrohr D40/D30



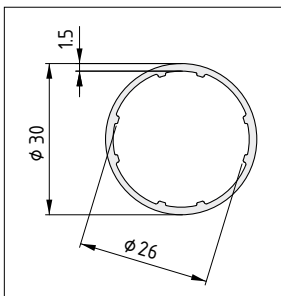
Profil 6 D30



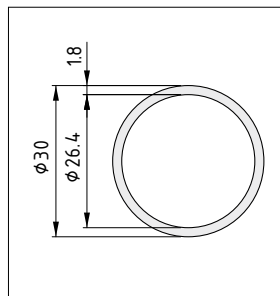
Profil 6 D30 4NO



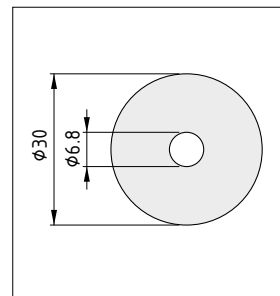
Rohr D30



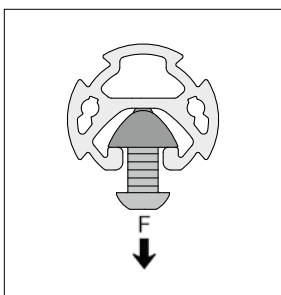
Rohr D30x1,8 KU



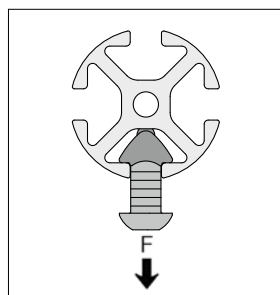
Rohr KH D30x11,6



Zugbelastung



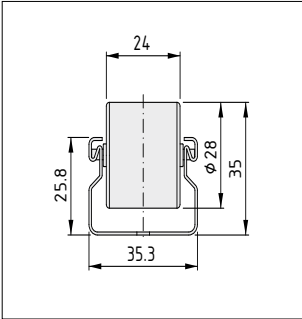
$F_{\max} = 3500 \text{ N}$



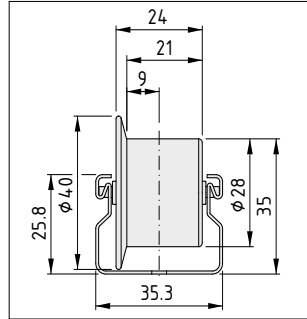
$F_{\max} = 1500 \text{ N}$

# Rollenbahnen

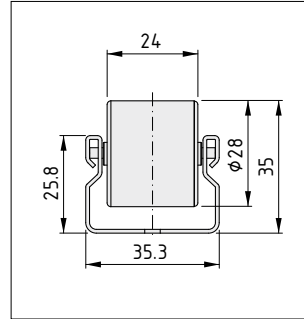
Rollenbahn St D30



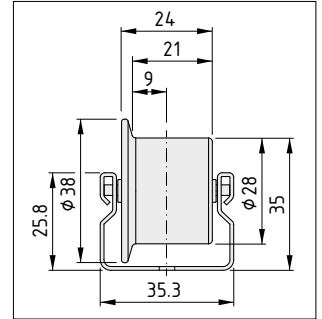
Rollenbahn St D30 mit Bordscheibe



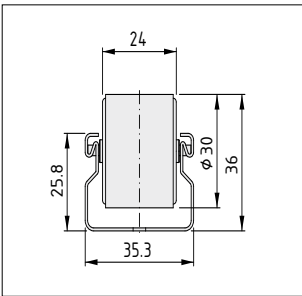
Rollenbahn St D30 T1



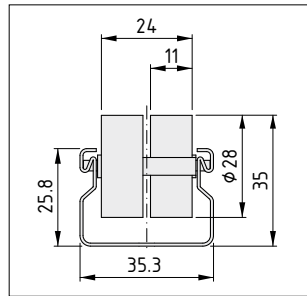
Rollenbahn St D30 T1 mit Bordscheibe



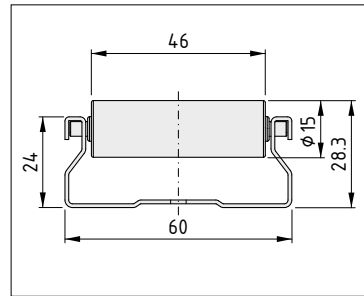
Rollenbahn St D30 stahlbereift



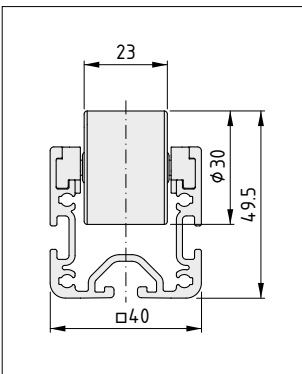
Rollenbahn St D30/2



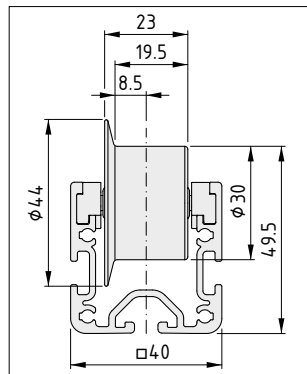
Rollenbahn St 60x24 D15



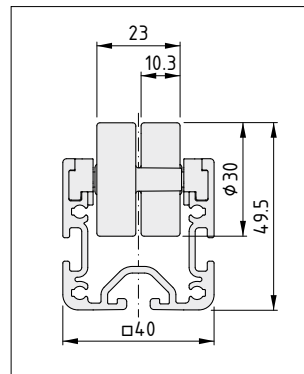
Rollenbahn 6 40x40 E D30



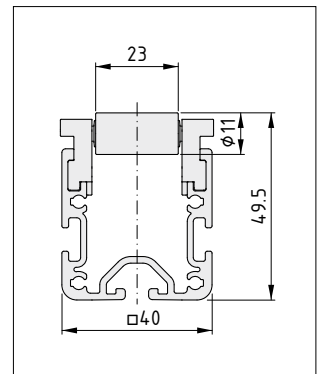
Rollenbahn 6 40x40 E D30 mit Bordscheibe



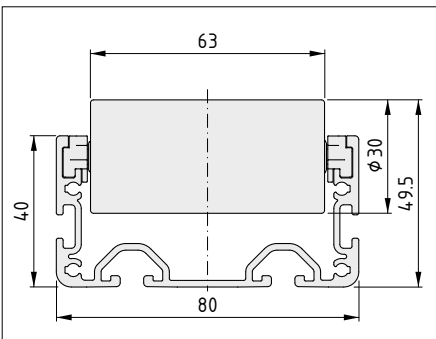
Rollenbahn 6 40x40 E D30/2



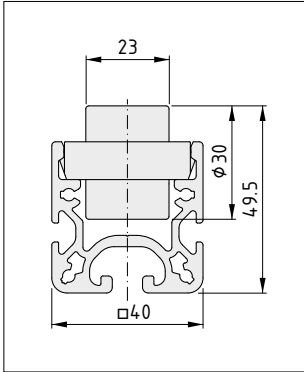
Rollenbahn 6 40x40 E D30 D11



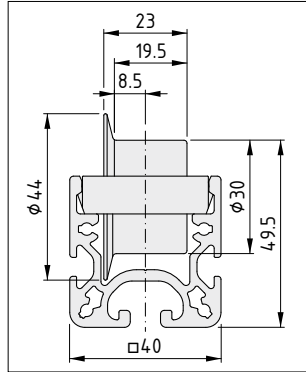
Rollenbahn 6 80x40 E D30



Rollenbahn 8 D30

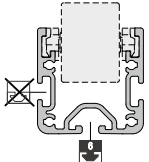
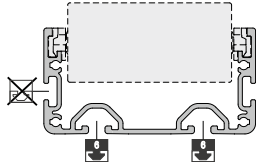
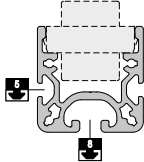
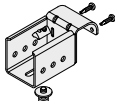
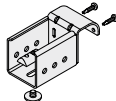
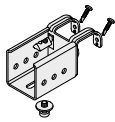
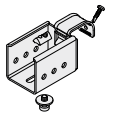


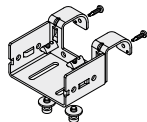


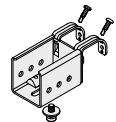
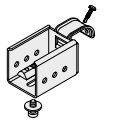
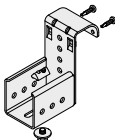
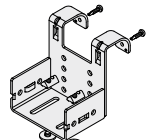
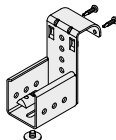
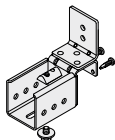
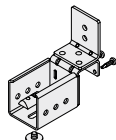


Rollenbahn 8 D30 mit Bordscheibe



# Einbaumaße der Rollenbahnen St und Al inklusive Aufnahmen

|  | Rollenbahn St D30  | Rollenbahn St 60x24 D15  |
|--|--|--|
|  |  |  |
|  | a = 17 mm<br>b = 23 mm<br>c = 14 mm<br>d = 20,5 mm<br>0.0.642.47<br>               | a = 18 mm<br>b = 24 mm<br>c = 7 mm<br>d = 22,5 mm<br>0.0.674.02<br>                |
|  | a = 18 mm<br>b = 24 mm<br>c = 13 mm<br>d = 22 mm<br>0.0.647.07<br>                 | 0.0.647.06<br>   |
|  | a = 17 mm<br>b = 11 mm<br>c = 48 mm<br>d = 20,5 mm<br>0.0.642.46<br>               |  |
|  | a = 17 mm<br>b = 26 mm<br>c = 63 mm<br>d = 20,5 mm<br>0.0.652.46<br>               | a = 17,5 mm<br>b = 25 mm<br>c = 56 mm<br>d = 22,5 mm<br>0.0.674.03<br>             |
|  | a = 66 mm<br>b = 23 mm<br>c = 14 mm<br>d = 20,5 mm<br>e = 13 mm<br>0.0.658.17<br>  | a = 66 mm<br>b = 24 mm<br>c = 7 mm<br>d = 22,5 mm<br>e = 14,5 mm<br>0.0.681.84<br> |
|  | a = 22 mm<br>b = 22 mm<br>c = 15 mm<br>d = 33,5 mm<br>0.0.687.62<br>               |  |
|  | a = 71 mm<br>b = 31,5 mm<br>c = 5,5 mm<br>d = 34 mm<br>e = 19 mm<br>0.0.687.61<br> |  |

| Rollenbahn 6 40x40 E D30  | Rollenbahn 6 80x40 E D30   | Rollenbahn 8 D30  |
|---|--|---|
|    |   |    |
| <p>a = 17 mm    0.0.660.57<br/>           b = 23 mm<br/>           c = 28,5 mm<br/>           d = 18 mm</p>    |  | <p>a = 17 mm    0.0.652.48<br/>           b = 23 mm<br/>           c = 28,5 mm<br/>           d = 18 mm</p>    |
| <p>a = 18 mm    0.0.660.59    0.0.660.60<br/>           b = 23 mm<br/>           c = 28,5 mm<br/>           d = 22 mm</p>   <p>a = 18 mm    0.0.667.56    0.0.667.57<br/>           b = 23 mm<br/>           c = 29 mm<br/>           d = 22,5 mm</p>   | <p>a = 17,5 mm    0.0.667.54<br/>           b = 23 mm<br/>           c = 29 mm<br/>           d = 22,5 mm</p>  <p>a = 18 mm    0.0.667.56    0.0.667.57<br/>           b = 23 mm<br/>           c = 29 mm<br/>           d = 22,5 mm</p>   | <p>a = 18 mm    0.0.652.58    0.0.652.64<br/>           b = 23 mm<br/>           c = 28,5 mm<br/>           d = 22 mm</p>   |
|   |  |   |
| <p>a = 17 mm    0.0.660.58<br/>           b = 26 mm<br/>           c = 77,5 mm<br/>           d = 20,5 mm</p>    | <p>a = 17,5 mm    0.0.667.55<br/>           b = 26 mm<br/>           c = 78 mm<br/>           d = 22,5 mm</p>   | <p>a = 17 mm    0.0.652.57<br/>           b = 26 mm<br/>           c = 77,5 mm<br/>           d = 20,5 mm</p>    |
| <p>a = 66 mm    0.0.659.19<br/>           b = 23 mm<br/>           c = 28,5 mm<br/>           d = 18 mm<br/>           e = 14 mm</p>   |  | <p>a = 66 mm    0.0.662.31<br/>           b = 23 mm<br/>           c = 28,5 mm<br/>           d = 18 mm<br/>           e = 14 mm</p>   |